

# ALU - BATEC ..

.. company profile ..



## ALU - BATEC ALUMINIUM & DECOR

DESIGN & EXECUTE

SAUDI ARABIA

TEL: 00966-26594992 - FAX: 00966-26594993

MOBILE: 00966-26594992

ARAB REPUBLIC OF EGYPT

FAX: 047-2979370 MOBILE: 0102010557-002

WWW.ALU-BATEC.COM

NFO@ALU-BATEC.COM

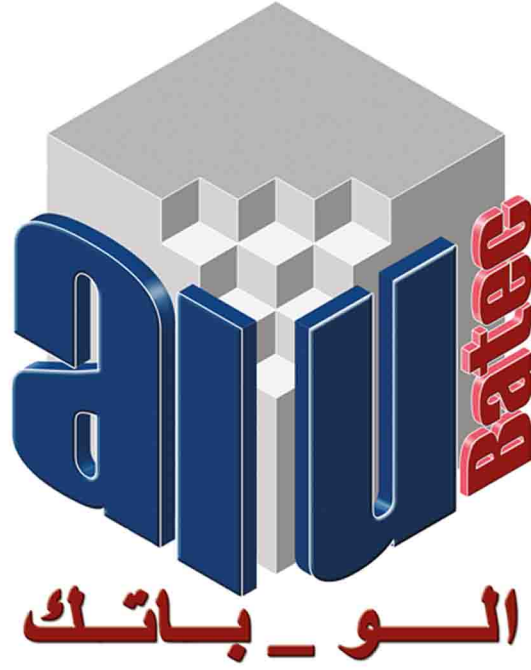
WWW.ALU-BATEC.COM

ABOUT THE COMPANY

IMPLEMENTED PROJECTS

UNDER IMPLEMENTATION PROJECTS

UNDER STUDIES



**ALUCOBOND®**

**AVSIVO**

**GIESSE®**



# ABOUT THE COMPANY

**ALU - BATEC**

ALUMMINIUM & DECOR

DESIGN & EXECUTE

SAUDI ARABIA

TEL: 00966-26594992 - FAX: 00966-26594993

MOBILE: 00966-26594992

ARAB REPUBLIC OF EGYPT

FAX: 047-2979370 MOBILE: 0102010557-002

WWW.ALU-BATEC.COM

INFO@ALU-BATEC.COM

WWW.ALU-BATEC.COM

**مصنوع آلومنيوم - باتك**

للألومنيوم و الديكور

تصميم و تنفيذ

المملكة العربية السعودية

تليفون : ٠٠٩٦٦-٢٦٥٩٤٩٩٢ فاكس : ٠٠٩٦٦-٢٦٥٩٤٩٩٣

جوال : ٠٠٩٦٦-٥٠٥٩٦٤٥٥

جمهورية مصر العربية

فاكس : ٠٠٢-٠١٠٢٠١٠٥٥٧ موبايل : ٠٤٧-٢٩٧٩٣٧٠

ABDULATTIF@ALU-BATEC.COM

INFO@ALU-BATEC.COM

WWW.ALU-BATEC.COM



# ALU\_BATEC

## for Aluminum & Decor

The parent organization specializing in the contracting business architecture and has implemented several projects for it's owners , individuals and government agencies , so that it had to establish an aluminum & décor branch to implement the aluminum works for buildings that work in it

It had registered under an official trade name : **ALU\_BATEC**



Aluminum branch includes a selection group of engineers who are specialist in this field, they design & execute all Aluminum works via a professional labors from different countries , using the latest specialized machines for cutting, assembly & fixing Aluminum



**ALU\_BATEC** for Aluminum & Décor has implemented numerous community and government projects , and it has a private sectors manufactured in European and local companies

The alloy No. 6063 is used in the manufacture of these sectors according to international standards , this alloy is thermally processed by the processor T6, and have been accessed by heating sectors of 185 m for five hours



## TECHNICAL INFORMATION ABOUT OUR SECTIONS

### Chemistry:

These profiles are made of silicon, Magnesium and some other elements.

ALLOY	SI	Fe	Mg	Mn	Cu	Zn	Al
٦٠٦٢,٣٥	0.42/0.48	0.16/0.22	0.45/0.51	٠,٠٣	٠,٠٢	٠,٠٢	

### Mechanical properties:

Temper	Thickness (min)		Tensile Strenght			Elongation % min. in 50mm
	over	upto		Ultimate	Yield	
T6	-	25.0	205		170	8
	25.0	150.0	185		160	10

### Typical

Temper	Tensile Strength (MPa)		Elongation %Min. in 50 mm × 1.5 mm thick	hardness		Fatigue strength endurance limit (MPa)	Shear strength ultrnate (Mpa)
	240	215			73		
T6	240	215	12		73	69	152

### Fabrication Characteristics:

Corrosion Resistance : good

Machining : Moderate but improves with increased temper

Weld ability : Suitable for gas, and resistance spot weld

Anodizing : Very good

Brazing : good

Cold Forming : Annealed good reducing with increase in hardness

### Physical properties ( typical):

Temper	Terminal Conductivity AT 25 ° C (W/M K)	ELECTRICAL Conductivity AT 20 ° C M5/m	Electrical Resistivity At 20 ° C	Density kg /m <sup>3</sup> × 10 <sup>3</sup>	Linear expansion	
T6	201	31	0.033	2.70	23	615- 650

### Heat Treatment:

Ageing practices will vary depending on the desired mechanical properties. The optimum practice is a 5 hour soak at 185° C .Refer to the charts for variations to cycles and mechanical properties, The data for the curves have been from die quenched samples with a thickness of 3.2 mm and less.

### NOTE:

The content of this DATA SHEET and the values detailed shall not be considered in any way as a warranty, whether expressed or implied.



الو.باتك

WESSAL  
0505 35 16 16





# IMPLEMENTED PROJECTS

“ OUR DESIGNS ”

IMPLEMENTED PROJECTS

**ALU - BATEC**

ALUMMINIUM & DECOR

DESIGN & EXECUTE

SAUDI ARABIA

TEL: 00966-26594992 - FAX: 00966-26594993

MOBILE: 00966-26594992

ARAB REPUBLIC OF EGYPT

FAX: 047-2979370 MOBILE: 0102010557-002

WWW.ALU-BATEC.COM

INFO@ALU-BATEC.COM

WWW.ALU-BATEC.COM

مصنوع آلومنيوم - باتك

للألومنيوم و الديكور

تصميم و تنفيذ

المملكة العربية السعودية

تليفون : ٠٠٩٦٦-٢٦٥٩٤٩٩٢ فاكس : ٠٠٩٦٦-٢٦٥٩٤٩٩٣

جوال : ٠٠٩٦٦-٥٠٥٥٩٦٤٥٥

جمهورية مصر العربية

فاكس : ٠٠٢-٠١٠٢٠١٠٥٥٧ موبايل : ٠٤٧-٢٩٧٩٣٧٠

ABDULATTIF@ALU-BATEC.COM

INFO@ALU-BATEC.COM

WWW.ALU-BATEC.COM



THE DESIGN



AFTER IMPLEMENTATION

# AL SALAMY STATION



EL SHARBTLY ST. - JEDDAH



THE DESIGN



AFTER IMPLEMENTATION





### THE DESIGN



### AFTER IMPLEMENTATION

# AL MASA PLAZA

AL AMIR SULTAN ST. - JEDDAH



THE DESIGN



AFTER  
IMPLEMENTATION





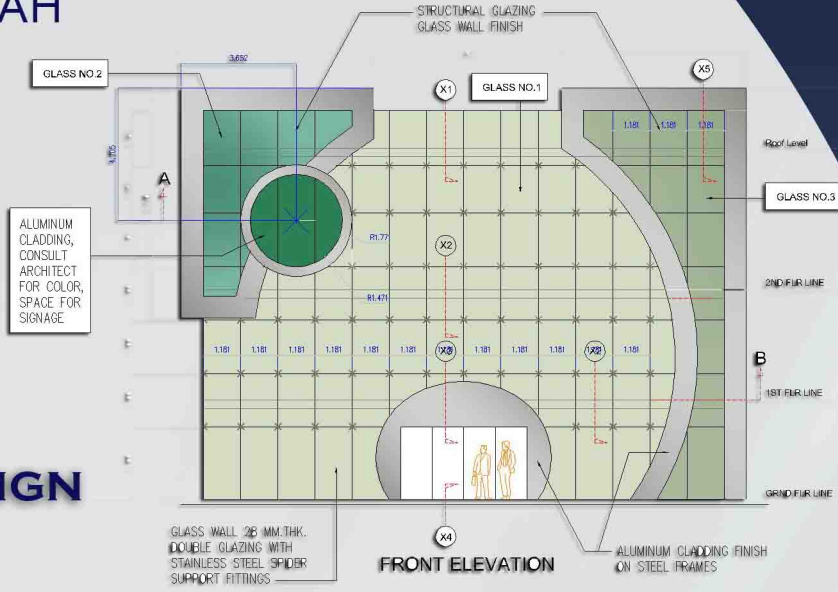
**THE DESIGN**



**AFTER IMPLEMENTATION**



# ELWAAN COMPANY HEAD OFFICE JEDDAH



## THE DESIGN



## AFTER IMPLEMENTATION



# AL KADI MALL

AL AMIR SULTAN ST. - JEDDAH



## THE DESIGN

## WHILE IMPLEMENTATION







## AFTER IMPLEMENTATION





# AL SIMU PALACE

AL AMIR SULTAN ST. - JEDDAH



THE DESIGN



AFTER IMPLEMENTATION

# MOSTASHARK" MEDICAL CENTER & DAR LAZORD" RESIDENTIAL BUILDING



JEDDAH



THE DESIGN



AFTER  
IMPLEMENTATION



IMPLEMENTED PROJECTS

2023 32 18 18  
WESSAL  
الو.باتك



# BENTLEY CAR SHOWROOM

PRINCE SULTAN ST. - JEDDAH



IMPLEMENTED PROJECTS

## THE DESIGN

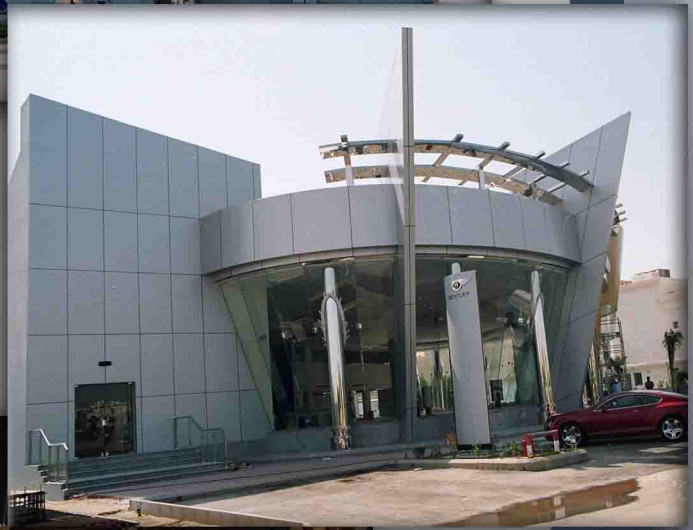
WHILE  
IMPLEMENTATION



505



**AFTER IMPLEMENTATION**



**INTERNAL  
WORKS**





# PETROL STATION

PRINCE SULTAN ROAD - JEDDAH



IMPLEMENTED PROJECTS

AFTER  
IMPLEMENTATION



505





# PETROL STATION

PRINCE SULTAN ROAD - JEDDAH



**THE DESIGN**



**AFTER  
IMPLEMENTATION**



**AFTER  
IMPLEMENTATION**

WESSAL  
1505 35 16 16







# AL-AASI RESIDENTIAL BUILDING JEDDAH

IMPLEMENTED PROJECTS



THE DESIGN



AFTER IMPLEMENTATION



WESSAL  
505 35 16 16

# GAAID RESIDENTIAL BUILDING

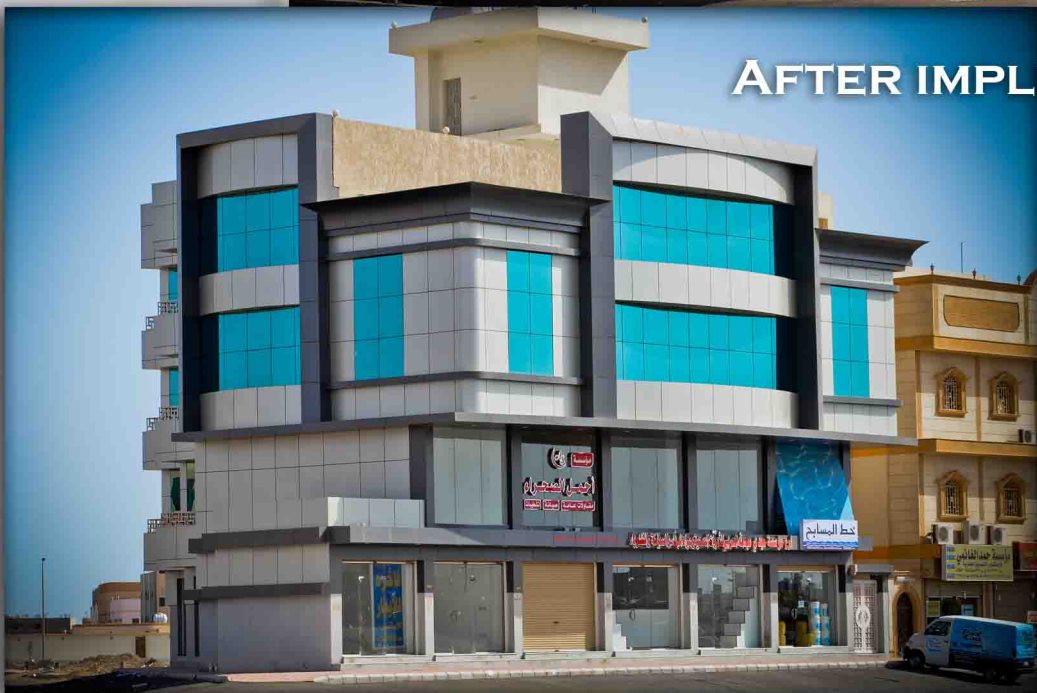
JEDDAH



THE DESIGN



AFTER IMPLEMENTATION



IMPLEMENTED PROJECTS

WESSAL  
2023 32 18 18



# ABO HAZEM RESIDENTIAL BUILDING JEDDAH

IMPLEMENTED PROJECTS



THE DESIGN



AFTER  
IMPLEMENTATION



505

# AL MAZZAK RESTAURANT

JEDDAH



THE DESIGN

AFTER  
IMPLEMENTATION





### THE DESIGN



### AFTER IMPLEMENTATION





## AFTER IMPLEMENTATION





# TECHNICAL & VOCATIONAL COLLEGE AL-RANIA



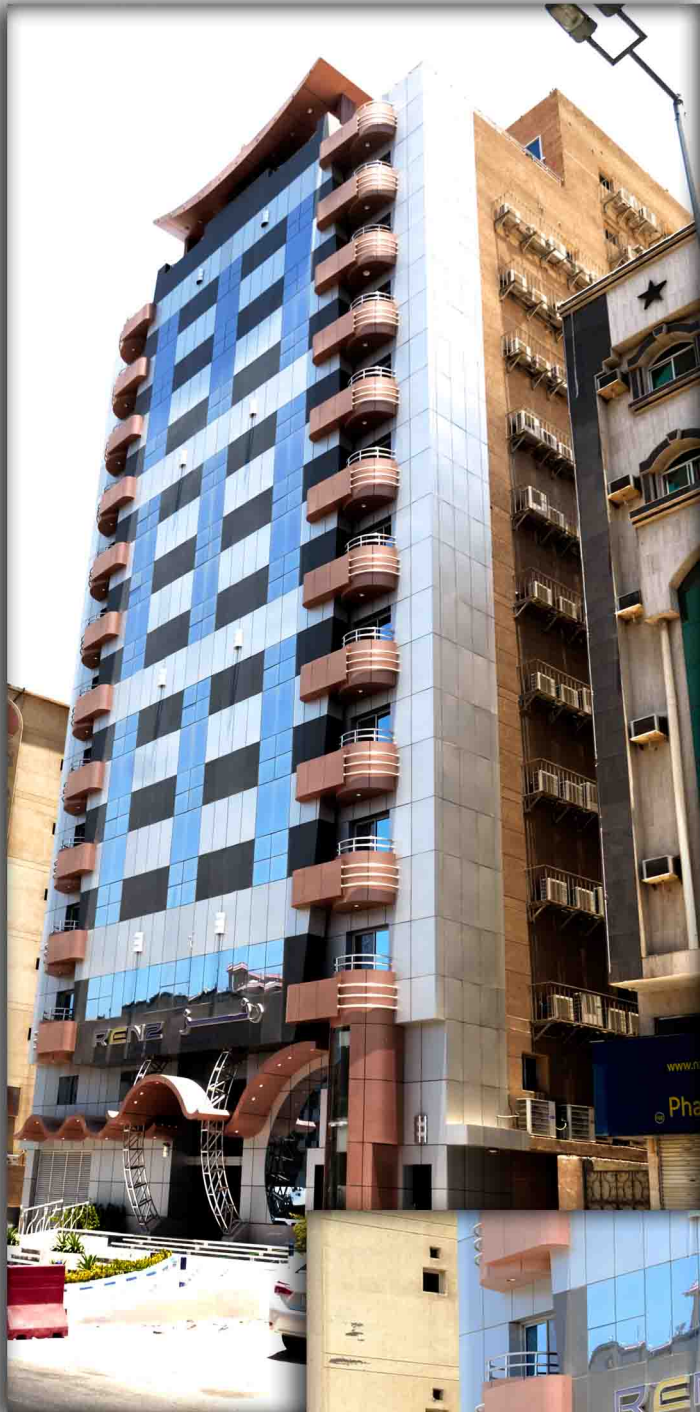
THE DESIGN



IMPLEMENTED PROJECTS



# AL-KAMAR RESIDENTIAL BUILDING JEDDAH



**THE DESIGN**



**AFTER  
IMPLEMENTATION**



### THE DESIGN



### AFTER IMPLEMENTATION

# AFTER IMPLEMENTATION





**KING ABDULAZIZ UNIVERSITY**

**JEDDAH**

**IMPLEMENTED PROJECTS**



**AFTER IMPLEMENTATION**



# AFTER IMPLEMENTATION



IMPLEMENTED PROJECTS



الو.باتك

WESSAL  
0505 35 16 16



# IMPLEMENTED PROJECTS

IMPLEMENTED PROJECTS



**ALU - BATEC**

ALUMMINIUM & DECOR

DESIGN & EXECUTE

SAUDI ARABIA

TEL: 00966-26594992 - FAX: 00966-26594993

MOBILE: 00966-26594992

ARAB REPUBLIC OF EGYPT

FAX: 047-2979370 MOBILE: 0102010557-002

WWW.ALU-BATEC.COM

NFO@ALU-BATEC.COM

WWW.ALU-BATEC.COM

مصنوع الو - باتك

للألومنيوم و الديكور

تصميم و تنفيذ

المملكة العربية السعودية

تليفون: ٠٠٩٦٦-٢٦٥٩٤٩٩٢ فاكس: ٠٠٩٦٦-٢٦٥٩٤٩٩٣

جوال: ٠٠٩٦٦-٥٠٥٩٦٤٥٥

جمهورية مصر العربية

فاكس: ٠٠٢-٠١٠٢٠١٠٥٥٧ موبايل: ٠٤٧-٢٩٧٩٣٧٠

ABDULATTIF@ALU-BATEC.COM

INFO@ALU-BATEC.COM

WWW.ALU-BATEC.COM



# AL ESHMAWEE FOR TRADING JEDDAH



IMPLEMENTED PROJECTS

WESSAL  
505 35 16 16







# AL JONA FLOWER

OM ELQUORA ST. - JEDDAH



IMPLEMENTED PROJECTS

WESSAL  
505 35 16 16

# AL JONAH SWEETS

JEDDAH



AFTER IMPLEMENTATION



IMPLEMENTED PROJECTS



# HAMED MALL

AMIR SULTAN ST. - JEDDAH

IMPLEMENTED PROJECTS



**AFTER IMPLEMENTATION**

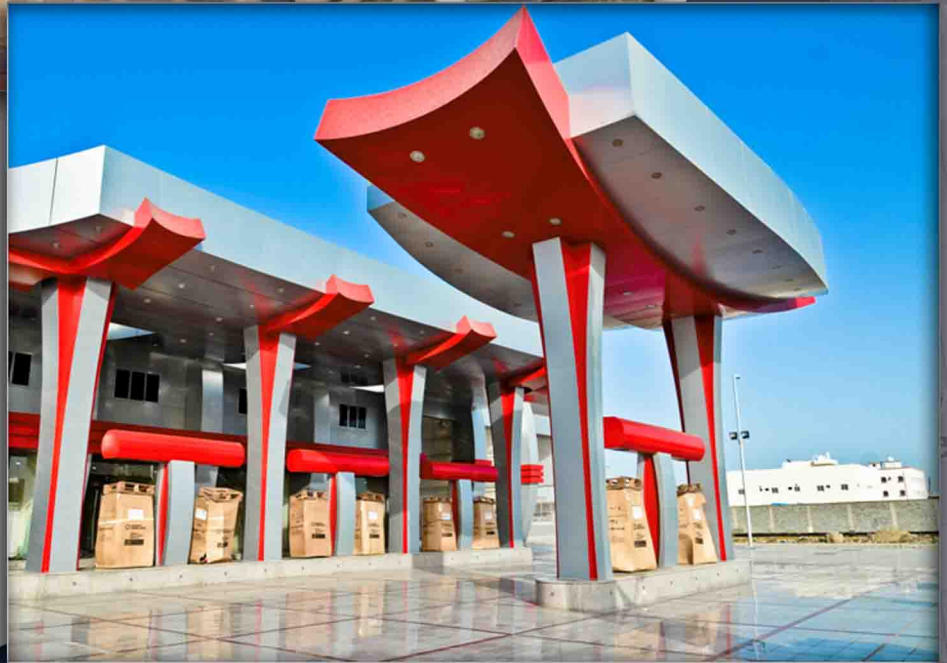
WESSAL  
1505 35 16 16

# PETROL STATION

EL HAMDANIA DIST-JEDDAH



AFTER IMPLEMENTATION



IMPLEMENTED PROJECTS

203



# KABABJI COMMERCIAL & RESIDENTIAL BUILDING JEDDAH

IMPLEMENTED PROJECTS



**AFTER  
IMPLEMENTATION**



WESSAL  
505 35 16 16

# KANOO COMPANY

JEDDAH



**AFTER IMPLEMENTATION**



IMPLEMENTED PROJECTS



# ABOU DAWOOD TRADING CO

JEDDAH

IMPLEMENTED PROJECTS



## AFTER IMPLEMENTATION



WESSAL  
505 35 16 16



# AL-SAMMAN OFFICE

JEDDAH



## AFTER IMPLEMENTATION



# SULTANA COMMERCIAL BUILDING

JEDDAH



**WHILE IMPLEMENTATION**



**AFTER IMPLEMENTATION**



# AL-SAMMAN OFFICE

JEDDAH



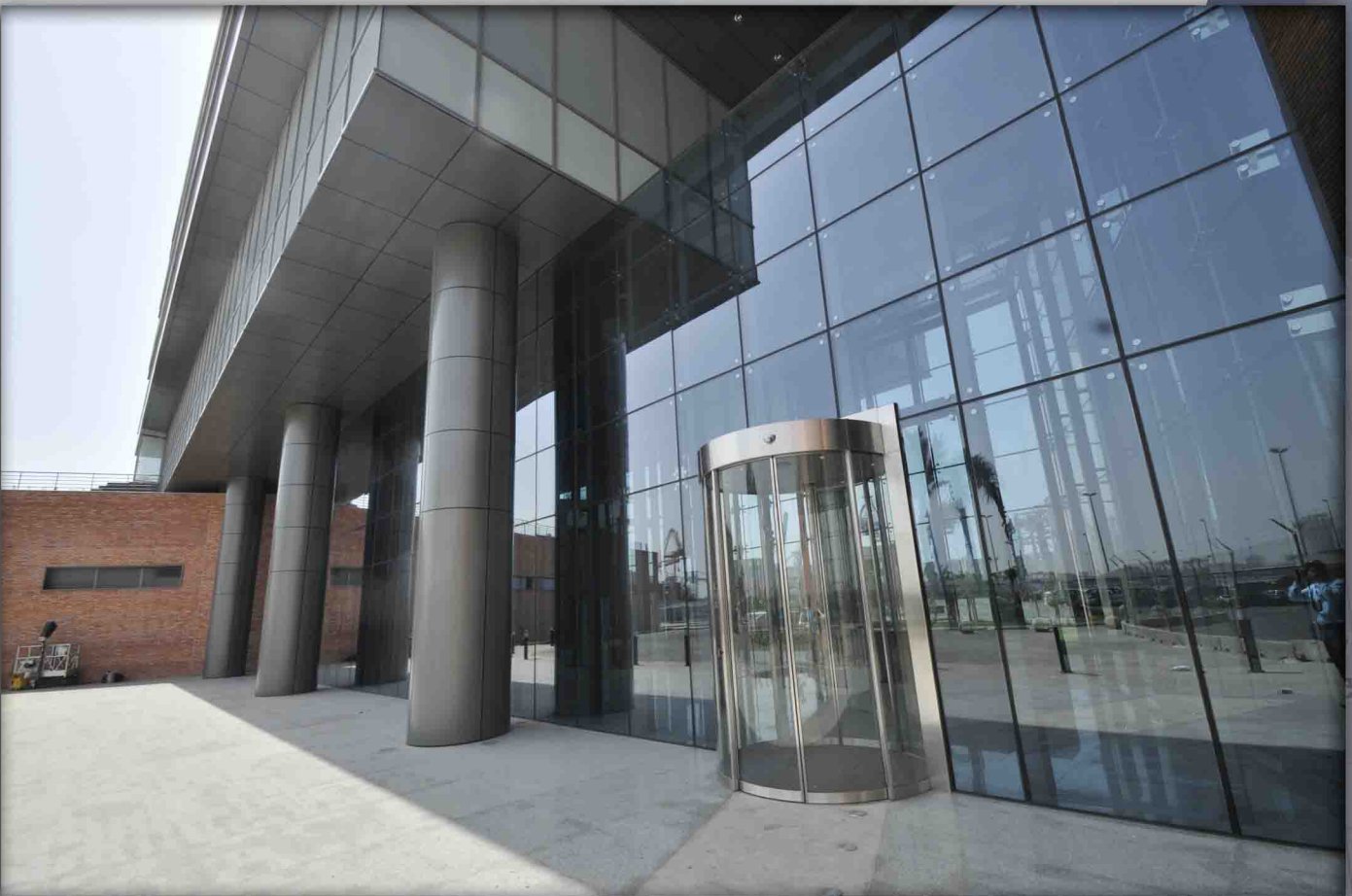
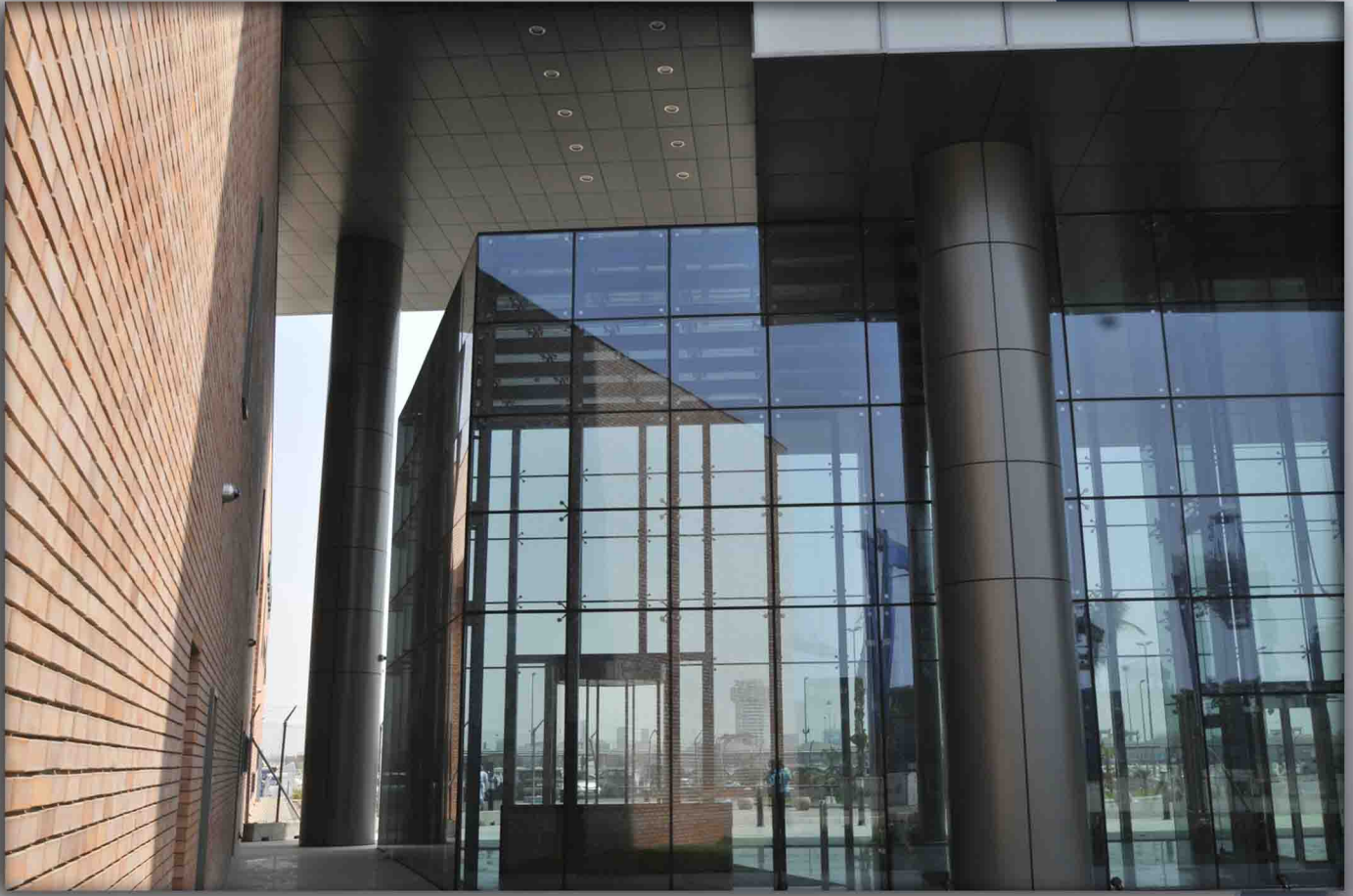
**AFTER IMPLEMENTATION**





**AFTER IMPLEMENTATION**







# RESIDENTIAL BUILDING

AL HAMRA - JEDDAH

IMPLEMENTED PROJECTS



**AFTER  
IMPLEMENTATION**



WESSAL  
505 35 16 16

# COMMERCIAL BUILDING

HERAA - JEDDAH



AFTER IMPLEMENTATION



IMPLEMENTED PROJECTS

2023 32 18 18  
WESAL  
٢٩٨٥١٨٢



# ADMINISTRATIVE BUILDING

ALTAHLIA ST. - JEDDAH

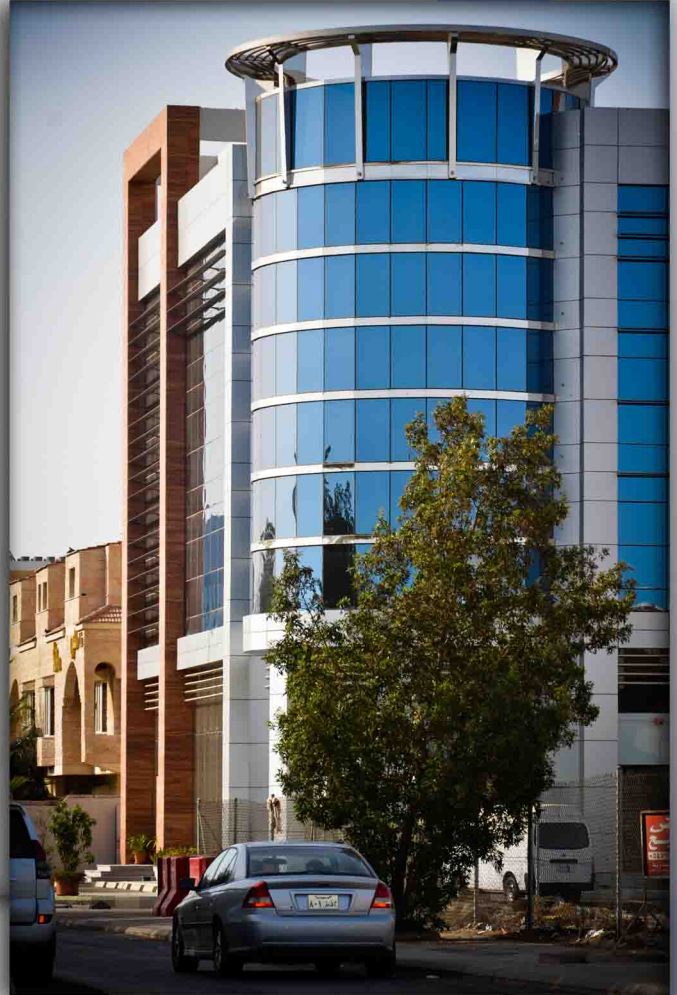
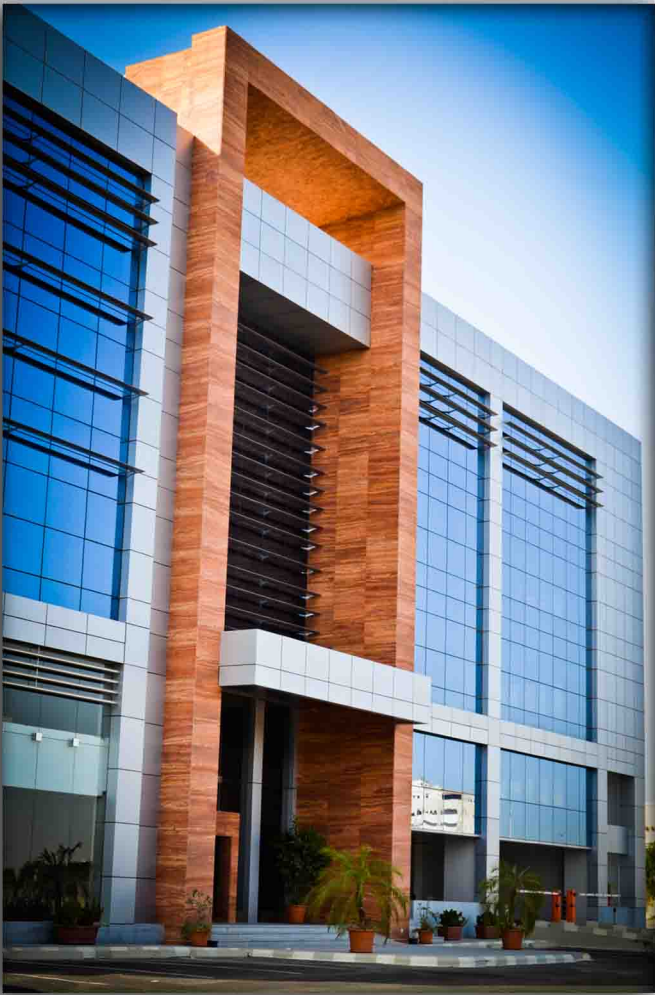
IMPLEMENTED PROJECTS



WHILE IMPLEMENTATION







**WHILE IMPLEMENTATION**





### AFTER IMPLEMENTATION



# RAWDA COMMERCIAL BUILDING JEDDAH



**AFTER  
IMPLEMENTATION**



IMPLEMENTED PROJECTS

Rawda Commercial Building  
JEDDAH  
2023 18 18



EMSCO COMPANY

JEDDAH

IMPLEMENTED PROJECTS



AFTER  
IMPLEMENTATION



1505

# OUR FACTORY ( ALU-BATEC FACTORY) JEDDAH



**AFTER  
IMPLEMENTATION**





# ALUMINUM & STAINLESS STEEL FABRICATION AL-HARAM - MEKKAH



**WHILE IMPLEMENTATION**



**AFTER  
IMPLEMENTATION**

IMPLEMENTED PROJECTS

1503



**AFTER  
IMPLEMENTATION**

# EL GHAMDI STATION

JEDDAH



# EL SAADI STATION

JEDDAH





# FRENCH COFFEE SHOP

JEDDAH



# SHOPS GATHERING

JEDDAH





**NCB BANK**

**KHAMEES MUSHATE**



IMPLEMENTED PROJECTS

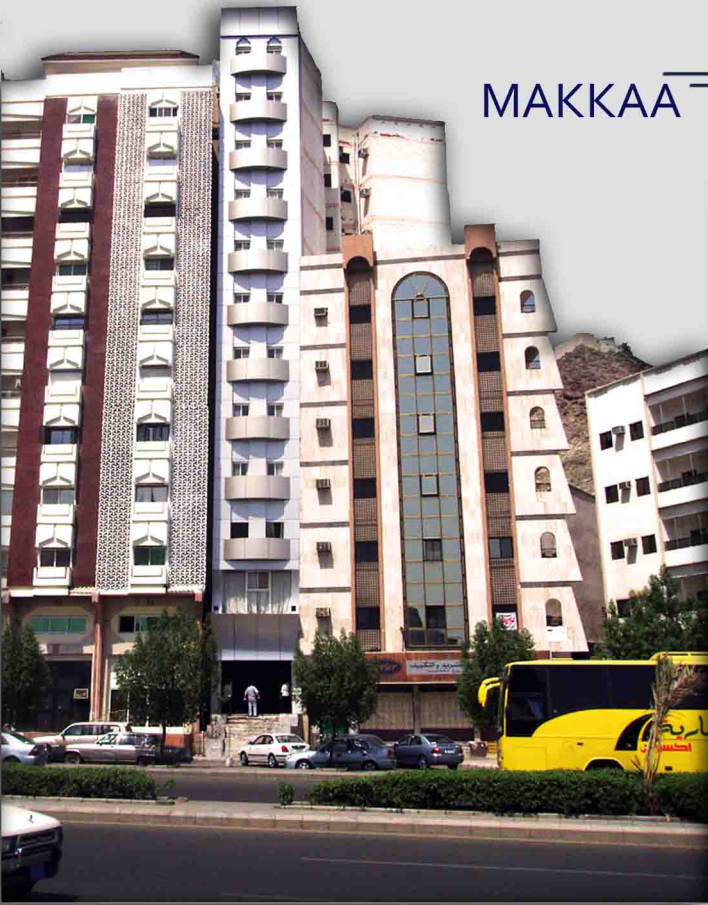
**COMMERCIAL & RESIDENTIAL UNITS**

**JEDDAH**



# HOTLE

MAKKAH



IMPLEMENTED PROJECTS

# VOLVO CENTER

JEDDAH





الو.باتك

WESSAL  
0505 35 16 16



# IMPLEMENTED PROJECTS “GLASS WORKS”

IMPLEMENTED PROJECTS



**ALU - BATEC**

ALUMMINIUM & DECOR

DESIGN & EXECUTE

SAUDI ARABIA

TEL: 00966-26594992 - FAX: 00966-26594993

MOBILE: 00966-26594992

ARAB REPUBLIC OF EGYPT

FAX: 047-2979370 MOBILE: 0102010557-002

WWW.ALU-BATEC.COM

NFO@ALU-BATEC.COM

WWW.ALU-BATEC.COM

مصنوع الو - باتك

للألومنيوم و الديكور

تصميم و تنفيذ

المملكة العربية السعودية

تليفون : ٠٠٩٦٦-٢٦٥٩٤٩٩٢ فاكس : ٠٠٩٦٦-٢٦٥٩٤٩٩٣

جوال : ٠٠٩٦٦-٥٠٥٩٦٤٥٥

جمهورية مصر العربية

فاكس : ٠٠٢-٠١٠٢٠١٠٥٥٧ موبايل : ٠٤٧-٢٩٧٩٣٧٠

ABDULATTIF@ALU-BATEC.COM

INFO@ALU-BATEC.COM

WWW.ALU-BATEC.COM



AFTER IMPLEMENTATION



# COMMERCIAL & RESIDENTIAL UNITS MAKKAH



**AFTER IMPLEMENTATION**



IMPLEMENTED PROJECTS

2023 32 18 18  
WESSAL  
2023 32 18 18

# INTERNATIONAL MEDICAL CENTER JEDDAH

IMPLEMENTED PROJECTS





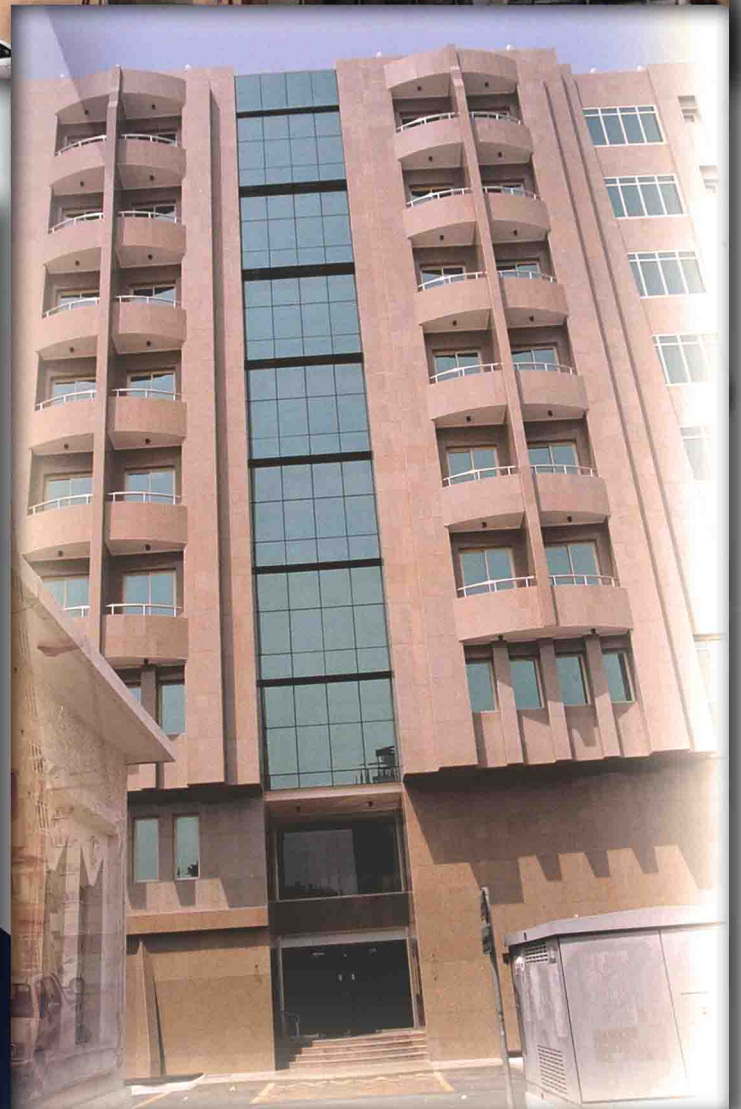




# AL ASEEL CENTER

JEDDAH

IMPLEMENTED PROJECTS



# HANY BASHA PALACE

JEDDAH



IMPLEMENTED PROJECTS

# SHEIK SALEH EL HANAKY PAKACE

## JEDDAH







# RESIDENTIAL BUILDING

JEDDAH



IMPLEMENTED PROJECTS

V  
2021





# AL-HARAM HOTLE

AL-MEDINA



IMPLEMENTED PROJECTS

2523AV  
35 32 16  
1505 32 16



# AL ATLAL SCHOOLS

JEDDAH



# AL SHATEE SCHOOLS

JEDDAH



IMPLEMENTED PROJECTS

WESSAL  
505 35 16 16

# COMMERCIAL & RESIDENTIAL BUILDING JEDDAH



## ELECTRIC CO. BDG

RABGH



IMPLEMENTED PROJECTS

2023 32 18 18  
WESSAL  
2233W



## RESIDENTIAL BUILDING

### JEDDAH



# COMMERCIAL & RESIDENTIAL UNITS JEDDAH



## APARTMENTS BLOCKS RABGH





الو.باتك

WESSAL  
0505 35 16 16



# UNDER IMPLEMENTATION PROJECTS



**ALU - BATEC**

ALUMMINIUM & DECOR

DESIGN & EXECUTE

SAUDI ARABIA

TEL: 00966-26594992 - FAX: 00966-26594993

MOBILE: 00966-26594992

ARAB REPUBLIC OF EGYPT

FAX: 047-2979370 MOBILE: 0102010557-002

WWW.ALU-BATEC.COM

NFO@ALU-BATEC.COM

WWW.ALU-BATEC.COM

**مصنوع الو - باتك**

للألومنيوم و الديكور

تصميم و تنفيذ

المملكة العربية السعودية

تليفون: ٠٠٩٦٦-٢٦٥٩٤٩٩٢ فاكس: ٠٠٩٦٦-٢٦٥٩٤٩٩٣

جوال: ٠٠٩٦٦-٥٠٥٥٩٦٤٥٥

جمهورية مصر العربية

فاكس: ٠٤٧-٢٩٧٩٣٧٠ موبايل: ٠٢-٠١٠٢٠١٠٥٥٧

ABDULATTIF@ALU-BATEC.COM

INFO@ALU-BATEC.COM

WWW.ALU-BATEC.COM



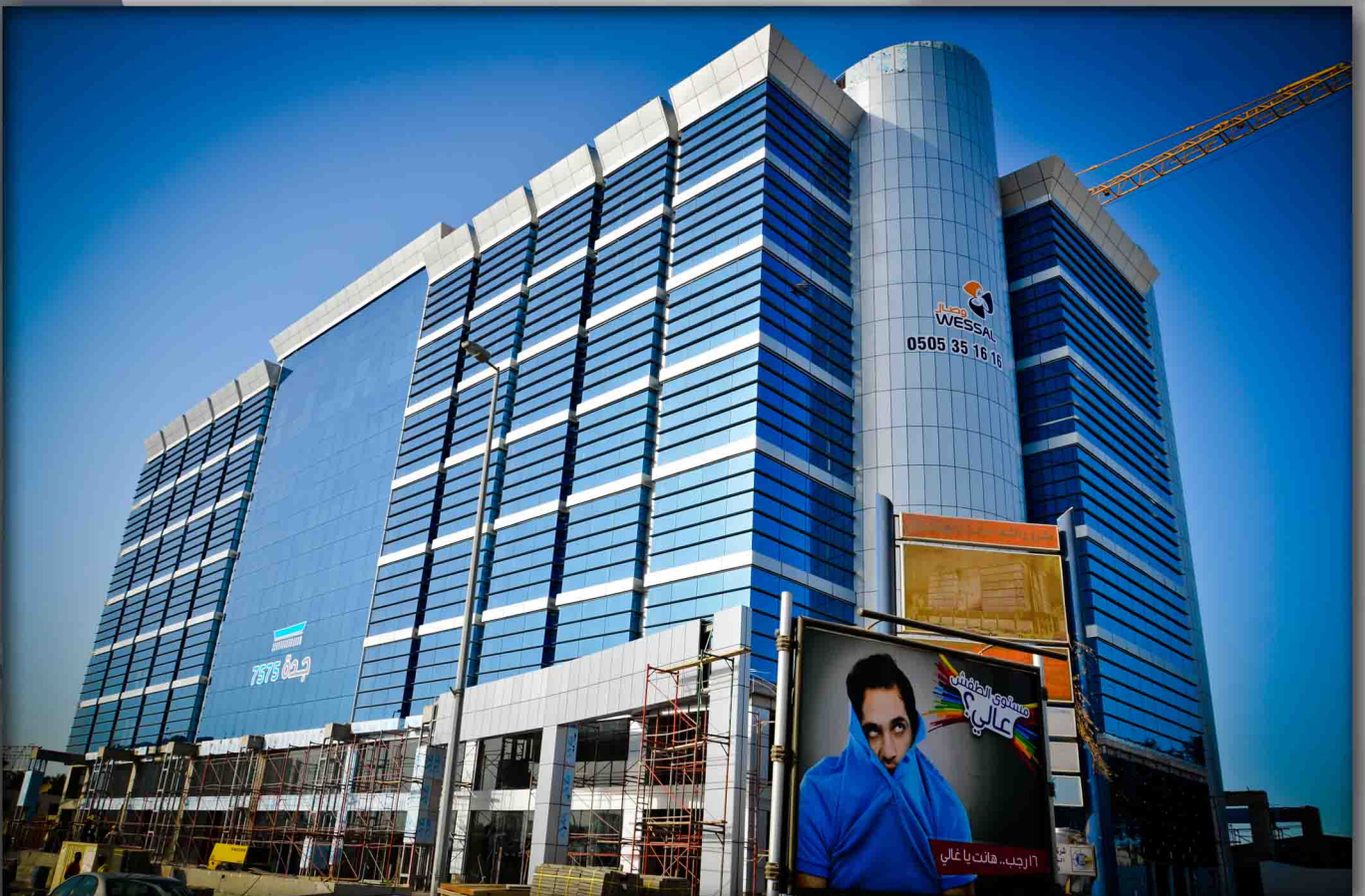
# DAR AL WESSAL BUILDING

MADINA ROAD JEDDAH



THE DESIGN

WHILE IMPLEMENTATION



UNDER IMPLEMENTATION PROJECTS

1505





## WHILE IMPLEMENTATION





# TECHNICAL & VOCATIONAL COLLEGE

JEDDAH



## THE DESIGN



UNDER IMPLEMENTATION PROJECTS

# TECHNICAL COLLAGE

ALAFLAJ



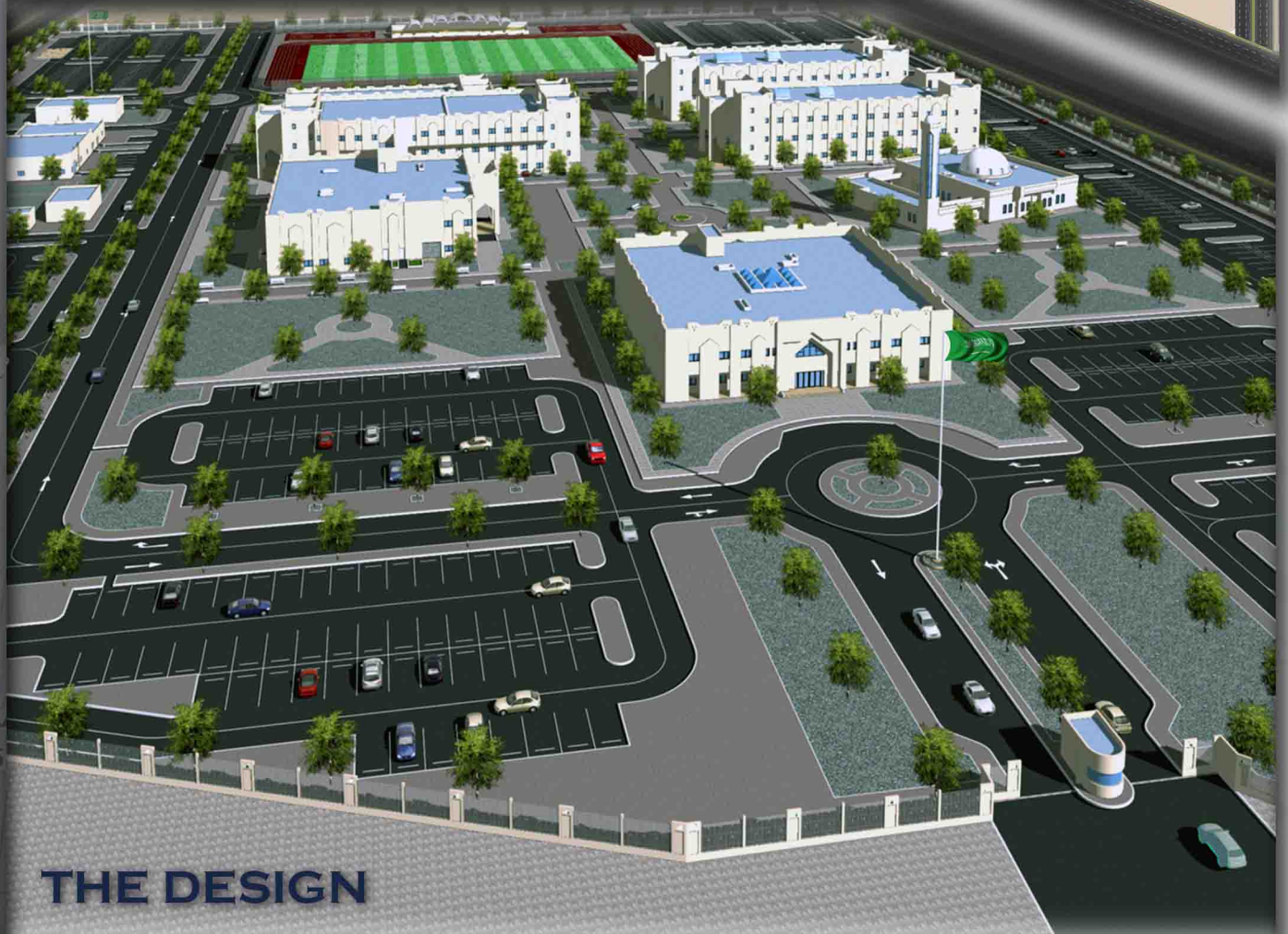
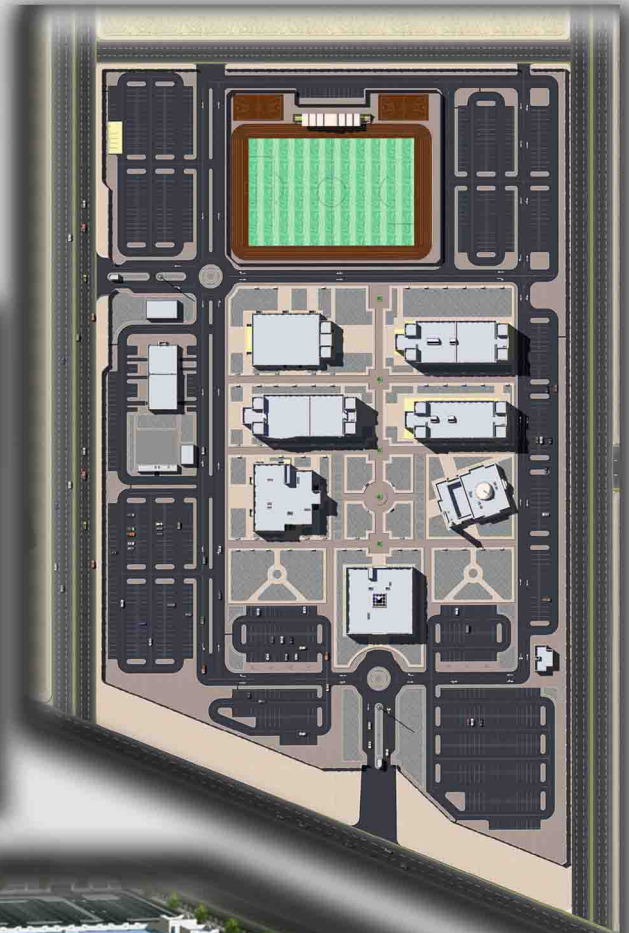
THE DESIGN

UNDER IMPLEMENTATION PROJECTS



# TECHNICAL & VOCATIONAL COLLEGE

## KONFOTHA



### THE DESIGN

UNDER IMPLEMENTATION PROJECTS

505



UNDER IMPLEMENTATION PROJECTS



# DARWISH TOWER

EGYPT



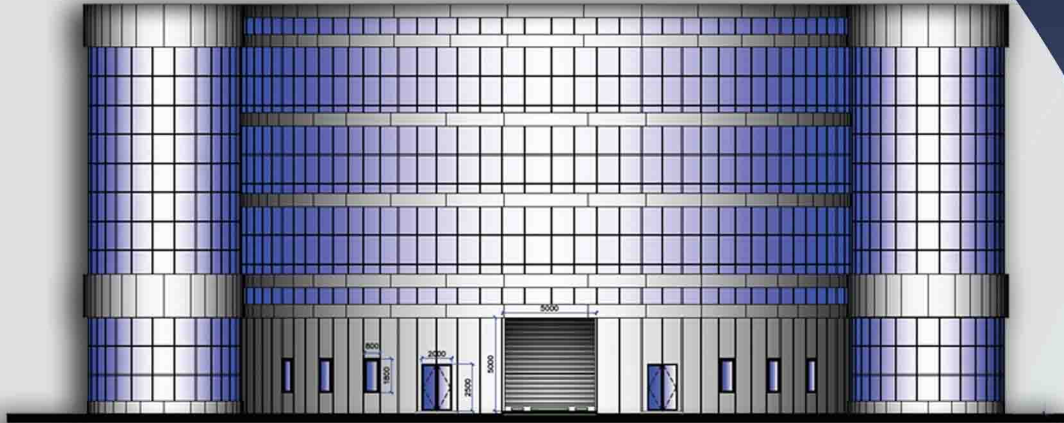
THE DESIGN

UNDER IMPLEMENTATION PROJECTS

WESS  
505 35 1

# NEPRO PLAST HEAD OFFICE

JEDDAH



## THE DESIGN



## WHILE IMPLEMENTATION



UNDER IMPLEMENTATION PROJECTS

1502

NIS



# MALL AT MADINAH ROAD

JEDDAH

## WHILE IMPLEMENTATION



UNDER IMPLEMENTATION PROJECTS

1505



# MOHAMADIA TOWER

EGYPT



## THE DESIGN



UNDER IMPLEMENTATION PROJECTS

2023 32 18 18  
WESSAL  
2023 32 18 18



UNDER IMPLEMENTATION PROJECTS

WESSAL  
505 35 16 16



الو.باتك

# UNDER STUDIES PROJECTS

**ALU - BATEC**

ALUMMINIUM & DECOR

DESIGN & EXECUTE

SAUDI ARABIA

TEL: 00966-26594992 - FAX: 00966-26594993

MOBILE: 00966-26594992

ARAB REPUBLIC OF EGYPT

FAX: 047-2979370 MOBILE: 0102010557-002

WWW.ALU-BATEC.COM

NFO@ALU-BATEC.COM

WWW.ALU-BATEC.COM

مصنوع آلو - باتك

للألومنيوم و الديكور

تصميم و تنفيذ

المملكة العربية السعودية

تليفون: 00966-26594992 - فاكس: 00966-26594993

جوال: 00966-26594992

جمهورية مصر العربية

فاكس: 047-2979370 - موبايل: 0102010557-002

ABDULATTIF@ALU-BATEC.COM

INFO@ALU-BATEC.COM

WWW.ALU-BATEC.COM

UNDER STUDIES



# TECHNICAL & VOCATIONAL COLLEGE HENAKIA



## COMMERCIAL BUILDING

JEDDAH



UNDER STUDIES

WESS  
0505 35 1

# TOYOTA SHOWROOM

JEDDAH



# NICE TIME MALL

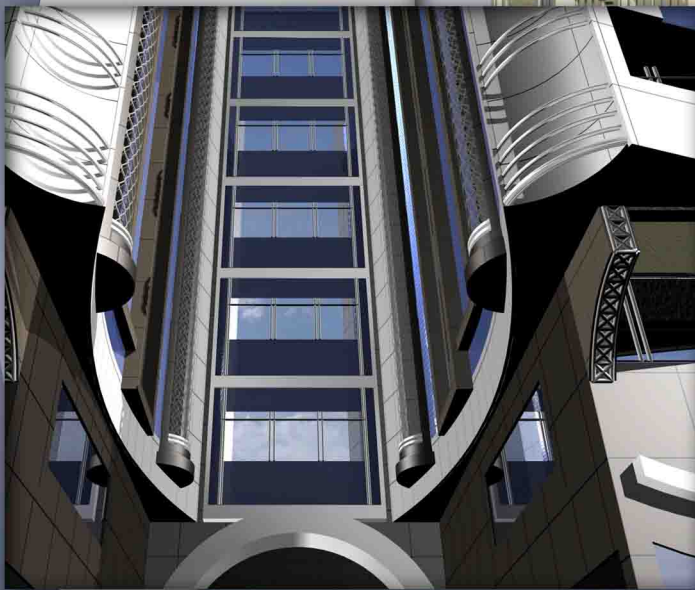
MAKKAH



# RESIDENTIAL BUILDING ( ELEVATION COVERING ) JEDDAH



**THE CURRENT SITUATION**



**THE DESIGN**

# KAHTANI SUITES

JEDDAH



**AL BASSAMY RESIDENTIAL BUILDING**  
JEDDAH



UNDER STUDIES

0202 32 18  
0223W



# COMMERCIAL CENTER

MADINAH ROAD - JEDDAH



# PRIAVATE OFFICE

JEDDAH



UNDER STUDIES

WESS  
0505 35 16



# DENTAL CLINIC

ABHA



# TRADING BUILDING

TAEEF





HOTEL

AL AZIZIYA -MAKKAH



UNDER STUDIES

WESSAL  
0505 35 16 16

# OBHUR TOWER

OBHUR



0502 32 16 16  
JAZZAW  
الو.باتك

UNDER STUDIES

# BUSINESS CENTER

60 ST - JEDDAH



## PRIAVATE TOWER

JEDDAH



# AL DAKEEL TOWER

JEDDAH



الدوراتك  
JEDDAH  
0502 32 18 18

UNDER STUDIES



الوزارة

UNDER STUDIES

WESSAL  
0505 35 16 16

ALU Batec

الو.بانك



**ALU - BATEC**

**ALUMINIUM & DECOR**

DESIGN & EXECUTE

**SAUDI ARABIA**

TEL: 00966-26594992 - FAX: 00966-26594993

MOBILE: 00966-26594992

**ARAB REPUBLIC OF EGYPT**

FAX: 047-2979370 MOBILE: 0102010557-002

[WWW.ALU-BATEC.COM](http://WWW.ALU-BATEC.COM)

[NFO@ALU-BATEC.COM](mailto:NFO@ALU-BATEC.COM)

[WWW.ALU-BATEC.COM](http://WWW.ALU-BATEC.COM)